

Community Pharmacy PCN Lead Role

Cambridgeshire and Peterborough

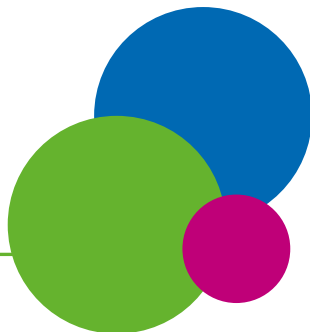


08 August 2023

Background and importance of role



- The NHS Community Pharmacy Contractual Framework (CPCF) 2019-2024 describes how pharmacy services will support the delivery of the NHS Long-Term Plan. It makes clear the expectation that **pharmacies will be integrated as a full partner within developing Primary Care Networks (PCN)**, doing more to protect public health, and taking on an expanded role in urgent care and medicines safety.
- More challenging, however, is the translation of these more strategic interactions into **meaningful local engagement and integration at PCN level**.
- For true integration of community pharmacies and PCNs, it is imperative it is supported with the key enabler of providing the capacity and time for community pharmacists to have meaningful local discussions to drive change, engagement and collaboration.



Expression of Interest

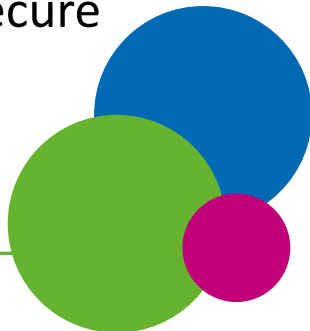


We are delighted to have secured funding for this exciting new, **Community Pharmacy PCN Lead** role.

We are looking to recruit **one Community Pharmacy PCN Lead per PCN** in Cambridgeshire and Peterborough, representing and taking leadership for the community pharmacies within a PCN grouping.

The Community Pharmacy PCN Lead will work with a PCN Clinical Director (or designated contacts, GP practices, etc) and community pharmacies within that PCN grouping, to promote and develop PCN integration in line with national and local priorities building strong relationships between GP practices and community pharmacies, enabling and driving collaborative working to provide excellent patient care and improving patient outcomes.

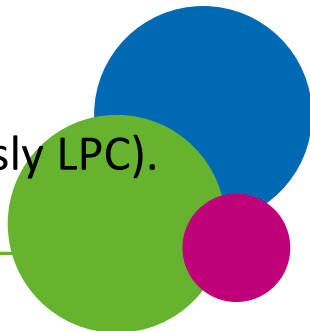
In addition, this role will also help provide an opportunity to evaluate the role, with the hope to secure continuation and further development of the role into 2024 and beyond.



Details for role and appointment process



- Funding has been allocated for **one Community Pharmacy PCN Lead per PCN**, within Cambridgeshire and Peterborough. **Two PCNs (Bretton Park and Hampton PCN and Peterborough and East PCN) are excluded** as these PCNs are included in the NHS Pilot for this role.
- The successful candidate will be asked to commit to **two days per month** over an **8-month period** (September 2023 to April 2024).
- The remuneration is **£320 per day (7.5 hours excluding a break)**.
- The candidate will be accountable to the ICS Community Pharmacy Clinical Lead.
- Service Level Agreement will be provided.
- **Appointment Process**
 - ✓ Expression of Interest
 - ✓ In collaboration with ICB and Community Pharmacy Cambridgeshire and Peterborough (previously LPC).

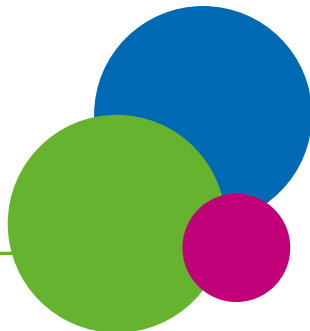


Role Description



The Community Pharmacy PCN Lead will be responsible for:

- Facilitate the **development of strong relationships between all stakeholders** within the PCN grouping, **building effective communication mechanisms**, which supports engagement and collaborative working.
- **Liaising with the PCN Clinical Director** (or other designated key contacts):
 - to **understand PCN priorities, initiatives and population needs, including inequalities.**
 - **highlighting opportunities and promoting services** that contribute to PCN initiatives and priorities, enabling collaborative working.
- Engaging in at least two meetings before 31 March 2024 with the PCN Clinical Director. One of these meetings must be face to face.
- **Developing good working relationships with all pharmacies** aligned to the PCN, and any other pharmacies not aligned but have an interest due to geographical boundaries to enthuse and engage community pharmacies in delivery of local priorities, enabling change and improved awareness of community pharmacy services within the PCN.
- Facilitating at least one virtual or face to face meeting with all community pharmacies in the PCN grouping.
- **Facilitate and establish effective communication mechanisms** to engage with local pharmacy leads from each community pharmacy on a regular basis and to support pharmacy services.
- Liaising with community pharmacies across the PCN geographical footprint identifying and **sharing best practice** across the PCN.
- Supporting community pharmacy to transition to a new way of working to deliver integrated care within the PCN population and being mindful of a culture of integrated working.
- **Engaging with PCN pharmacists**, to develop relationships, to enable communication, and support integration of pharmacy.



Personal Specification – Skills, knowledge and values



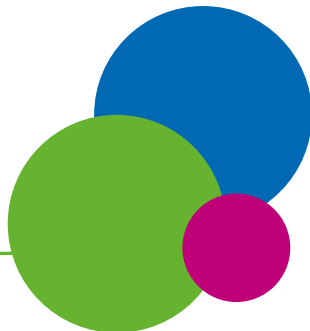
- Pharmacist, registered with the General Pharmaceutical Council.
- Actively practicing as a pharmacist, at least one session per week in a community pharmacy within the PCN grouping.
- Works across organisational, professional and cultural boundaries and achieving results through collaboration, co-operation and communication.
- Ability to communicate effectively, negotiate and influence healthcare professionals to implement change.
- Makes sound judgements and brings in new ideas in complex situations.
- Is sensitive and understanding of other professional's roles and responsibilities.
- Personal resourcefulness to lead change and reach goals.
- Evidence of working with a range of healthcare professionals.
- Awareness of NHS commissioning and partnership working.
- Credibility and track record of close liaison with colleagues to support effective working relationship between all sectors.



Next Steps



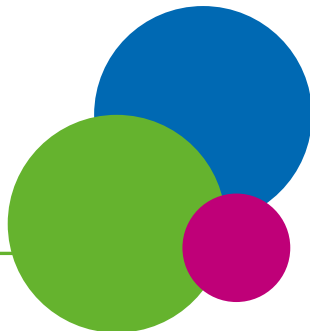
- **Complete the expressions of interest form** available here: <https://forms.office.com/e/mnT0iEbAff> by **midnight on Tuesday, 29 August 2023.**
- A list of **PCNs Groupings (PCN/GP Practices/CPs)**: see Appendix A at end of presentation
- Successful candidates will be **notified by Tuesday, 5 September 2023**
- Successful candidates, wishing to accept the role, will need to **complete the Service Level Agreement and return a signed copy by Friday, 8 September 2023.**
- The aim is for each CP PCN Lead to start by **Monday, 11 September 2023.**
- Induction meeting (date to be confirmed, likely w/c 25 September 2023).
- For further information, if you would like to discuss or need any help, please contact Indira at indira.pillay@nhs.net



Appendix A: PCN Groupings



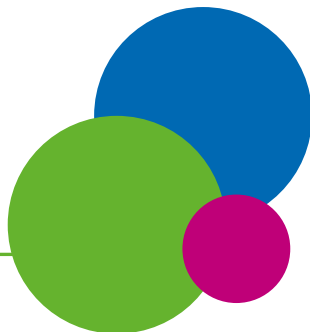
| PCN | Practice Name | Local Pharmacies within PCN |
|-------------------------------------|----------------------------------|--|
| A1 Network PCN | Alconbury and Brampton Surgeries | Alconbury Pharmacy |
| | Almond Road Surgery, St Neots | Brampton Pharmacy |
| | Buckden and Little Paxton | Buckden Pharmacy |
| | Kimbolton Medical Practice | Little Paxton Pharmacy |
| | Wellside Surgery, Sawtry | The Old Swan, Kimbolton |
| | | Boots Sawtry |
| BMC Paston PCN | Boroughbury Medical Centre | City Pharmacy @ New Primary Care Centre |
| | Paston | Mi Pharmacy – Werrington |
| | | The Chemist Shop, Glington |
| | | Walton Chemist |
| | | Werrington Pharmacy |
| Bretton Park and Hampton PCN | Bretton Medical Practice | Boots - Bretton Centre |
| | Hampton Health | Boots - Bretton Health Centre |
| | Park Medical Centre | Boots - Serpentine Green |
| | | Granville Pharmacy |
| | | Hampton Pharmacy |
| | | Mi Pharmacy - Eastfield Rd |
| | | Mi Pharmacy - Park Rd |
| | | Pharmacy Medicines Ltd (internet pharmacy) |
| | | Pharmadose (internet pharmacy) |
| | | Tesco - Serpentine Green |



Appendix A: PCN Groupings



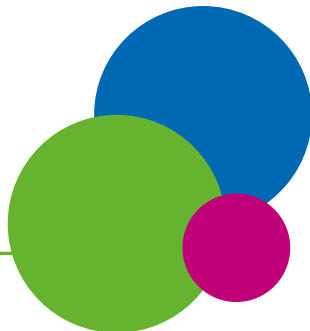
| PCN | Practice Name | Local Pharmacies within PCN |
|-----------------------------|--|---|
| CAM Medical PCN | Lensfield Medical Practice, Cambridge | Boots – Petty Cury |
| | Newnham Walk Surgery, Cambridge | Fitzwilliam Pharmacy |
| | Trumpington St Medical Practice, Cambridge | N K Janks Chemist |
| | | Welfare Pharmacy |
| Cambridge City 4 PCN | Mill Road Surgery, Cambridge | Cherry Hinton Pharmacy |
| | Cherry Hinton Med Centre & Brookfields | GFT Davies |
| | Cornford House Surgery, Cherry Hinton | Kays Chemist (Polaris Pharmacy) |
| | Petersfield Medical Practice, Cambridge | Kumar Pharmacy |
| | Queen Edith Medical Practice, Cambridge | Lloyds pharmacy in Sainsburys, Brooks Road (CLOSED) |
| | Woodlands Surgery, Cambridge | Numark Pharmacy |
| | | Petersfield Pharmacy |
| | | Pillsorted (internet pharmacy) |
| | | Superdrug - Fitzroy Street |
| | | Tesco - Fulbourn |
| | | The Village Pharmacy - Fulbourn |
| Cambridge City PCN | Arbury Road Surgery, Cambridge | Asda - Coldham's Lane |
| | Bottisham Medical Practice | Boots – Grafton Centre |
| | Cambridge Access Surgery | Boots – Newmarket Road |
| | East Barnwell Health Centre, Cambridge | Bottisham Pharmacy |
| | Nuffield Road Medical Centre, Cambridge | Ditton Pharmacy |
| | York Street Medical Practice, Cambridge | Lloyds Pharmacy – Nuffield Medical Centre |
| | | Well – Barnwell Road |
| | | Well - York Street |



Appendix A: PCN Groupings



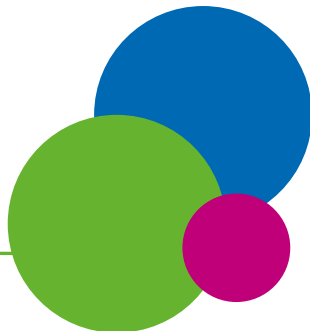
| PCN | Practice Name | Local Pharmacies within PCN |
|--|--|-------------------------------------|
| Cambs Northern Villages PCN | Cottenham Surgery | Over Healthcare |
| | Firs House Surgery, Histon | Tesco – Bar Hill |
| | Maple Surgery, Bar Hill Health Centre | Tesco – Milton |
| | Milton Surgery | Waterbeach Pharmacy |
| | Over Surgery | Well – Cottenham |
| | Swavesey Surgery | Well – Histon |
| | Waterbeach Surgery | Well – Impington |
| | Willingham Medical Practice | Willingham Pharmacy |
| Cantab PCN | Bridge Street Medical Centre, Cambridge | Boots - Chesterton Road |
| | Huntingdon Road Surgery, Cambridge | Lloyds pharmacy – Arbury Court |
| | Red House Surgery, Cambridge | Milton Road Pharmacy |
| | | Rowlands Pharmacy - Histon Road |
| | | Superdrug Pharmacy – Sidney Street |
| Central Thistlemoor and Thorpe Road PCN | Central Medical Centre, Peterborough | Graham Young Pharmacy |
| | Thistlemoor Medical Centre, Peterborough | Millfield Pharmacy |
| | Thorpe Road Surgery, Peterborough | Masters Pharmacy |
| Ely North PCN | Cathedral Medical Centre, Ely | Boots - Ely |
| | St George's Medical Centre, Littleport | Wellbeing Pharmacy Littleport |
| | St Mary's Surgery, Ely | Wellbeing - POW |
| | | Lloyds pharmacy in Sainsburys – Ely |
| | | St Georges Pharmacy Wellbeing |
| | | St Mary's Pharmacy |
| | | Tesco – Ely |



Appendix A: PCN Groupings



| PCN | Practice Name | Local Pharmacies within PCN |
|-----------------------|--|--|
| Ely South PCN | Burwell Surgery | Haddenham Pharmacy |
| | Haddenham Surgery | Lloyds pharmacy – Burwell |
| | Staploe Medical Centre | Lloyds pharmacy – Soham |
| | | Staploe Pharmacy |
| Fenland PCN | Cornerstone Practice, March | Boots – Broad Street, March |
| | Mercheford House, March | Boots – Riverside Medical Centre |
| | Ramsey Health Centre | Lloyds pharmacy – Great Whyte |
| | Riverside Practice, March | Lloyds pharmacy – March |
| | | Tesco – March |
| Granta PCN | Granta Medical Practices (6 sites) | Boots – Gt Shelford |
| | <i>Royston Health Centre (01 April 2023)</i> | Boots – Sawston |
| | | Sawston Partnership |
| | | Village Pharmacy – Linton |
| Huntingdon PCN | Acorn Surgery, Huntingdon | Acorn Pharmacy |
| | Hicks Group Practice, Huntingdon | Boots – Huntingdon |
| | Papworth Surgery | John G Cliffords |
| | Priory Fields Surgery, Huntingdon | Lloyds pharmacy – Huntingdon |
| | | Lloyds pharmacy in Sainsburys – Huntingdon |
| | | Papworth Pharmacy |
| | | Priory Fields Pharmacy |
| | | Tesco – Huntingdon |



Appendix A: PCN Groupings



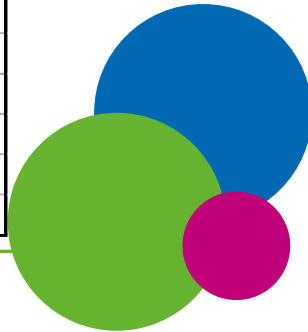
| PCN | Practice Name | Local Pharmacies within PCN |
|--------------------------------------|--|---|
| Meridian PCN | Bourn Surgery | Bassingbourn Pharmacy |
| | Comberton & Eversden Surgeries | Well – Melbourn |
| | Harston Surgery | Lloyds pharmacy – Royston (Hertfordshire LPC) |
| | Orchard Surgery, Melbourn | Boots – Burns Road (Hertfordshire LPC) |
| | Roysia Surgery, Royston | Boots – High St, Royston (Hertfordshire LPC) |
| | Monkfield Medical Practice, Cambourne | Tesco – Royston (Hertfordshire LPC) |
| | | |
| Peterborough and East PCN | Jenner Healthcare (3 sites) | Asda - Peterborough |
| | Nene Valley Hodgson | Boots - Eye |
| | Thomas Walker Westgate | Boots - Queensgate Centre |
| | | Hall the Chemist - Thorney |
| | | Lloyds pharmacy - Clayton |
| | | Shrives Chemist |
| | | Thomas Walker Pharmacy |
| Peterborough Partnerships PCN | Ailsworth Medical Centre | Botolph Bridge Pharmacy |
| | Botolph Bridge, Peterborough | Dogsthorpe Pharmacy |
| | Nightingale Medical Centre, Peterborough | Halls the Chemist - Castor |
| | The Grange Medical Centre, Peterborough | Halls the Chemist – Orton Wistow |
| | Westwood Clinic, Peterborough | Lloyds pharmacy - Ortongate |
| | Willow Tree Surgery | Lloyds pharmacy in Sainsburys - Oxney Road. |
| | | Netherton Pharmacy |
| | | Newborough Pharmacy |
| | | Well - Paston |
| | | Well - Westwood |
| | West Town Chemist | |



Appendix A: PCN Groupings



| PCN | Practice Name | Local Pharmacies within PCN |
|-------------------------------|---|---|
| South Fenland PCN | Fenland Group Practices (4 sites, Doddington, Wimblington, Manea & Rainbow Surgeries) | Lloyds pharmacy - Chatteris |
| | George Clare Surgery, Chatteris | Alchemy Pharmaceuticals (previously Lloyds pharmacy) – Swan Drive |
| | Priors Field (Sutton) | Lloyds pharmacy – Stockingfen Rd, Ramsey |
| | | Sutton Pharmacy |
| South Peterborough PCN | Old Fletton Surgery | Boots - New Queen Street Whittlesey |
| | New Queen St, Whittlesey (2 sites) | Halls the Chemist - Stanground |
| | Wansford Surgery | Halls the Chemist - Stilton |
| | Yaxley | Landsdowne Pharmacy |
| | | Odedra Pharmacy |
| | | Rowlands - Yaxley |
| | | Wansford Pharmacy (Northamptonshire LPC) |
| | | Well - Stanground |
| | Whittlesey Pharmacy | |
| St Ives PCN | Grove Medical Practice | Boots – St Ives |
| | Moat House Surgery, Warboys | Fenstanton Pharmacy |
| | Riverport Medical Practice (3 sites) | J W Anderson |
| | Spinney Surgery, St Ives | Kings Hedges Pharmacy (Previously Lloyds) |
| | | Lloyds pharmacy – St Ives |
| | | Wards of Warboys |
| | Well – St Ives | |



Appendix A: PCN Groupings



| PCN | Practice Name | Local Pharmacies within PCN |
|---------------------|--------------------------------|-----------------------------------|
| St Neots PCN | Great Staughton Surgery | Boots – St Neots |
| | Lakeside at St Neots (2 sites) | Gamlingay Pharmacy |
| | St Neots Health Centre | Lloyds pharmacy Cambourne |
| | | Lloyds pharmacy - Eaton Socon |
| | | Loves Farm Pharmacy |
| | | Tesco St Neots |
| | | Well St Neots - Cedar House |
| | | |
| Wisbech PCN | Clarkson Surgery, Wisbech | Asda Wisbech |
| | North Brink Practice, Wisbech | Boots - Horsefair Wisbech |
| | Parson Drove Surgery | Boots - Kirkgate Street Wisbech |
| | Trinity Surgery, Wisbech | Boots, De-Havilland Rd Wisbech |
| | | Day Lewis Pharmacy, Parsons Drove |
| | | Fairbrother's Pharmacy |
| | | North Brink Pharmacy |
| | | Tesco, Wisbech |
| | | Well – Wisbech |

